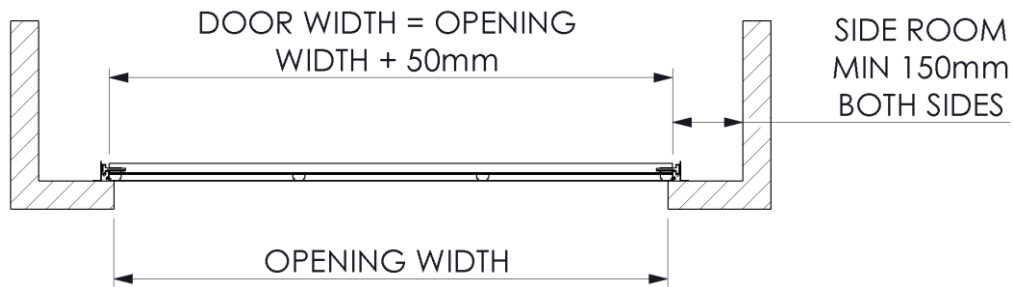
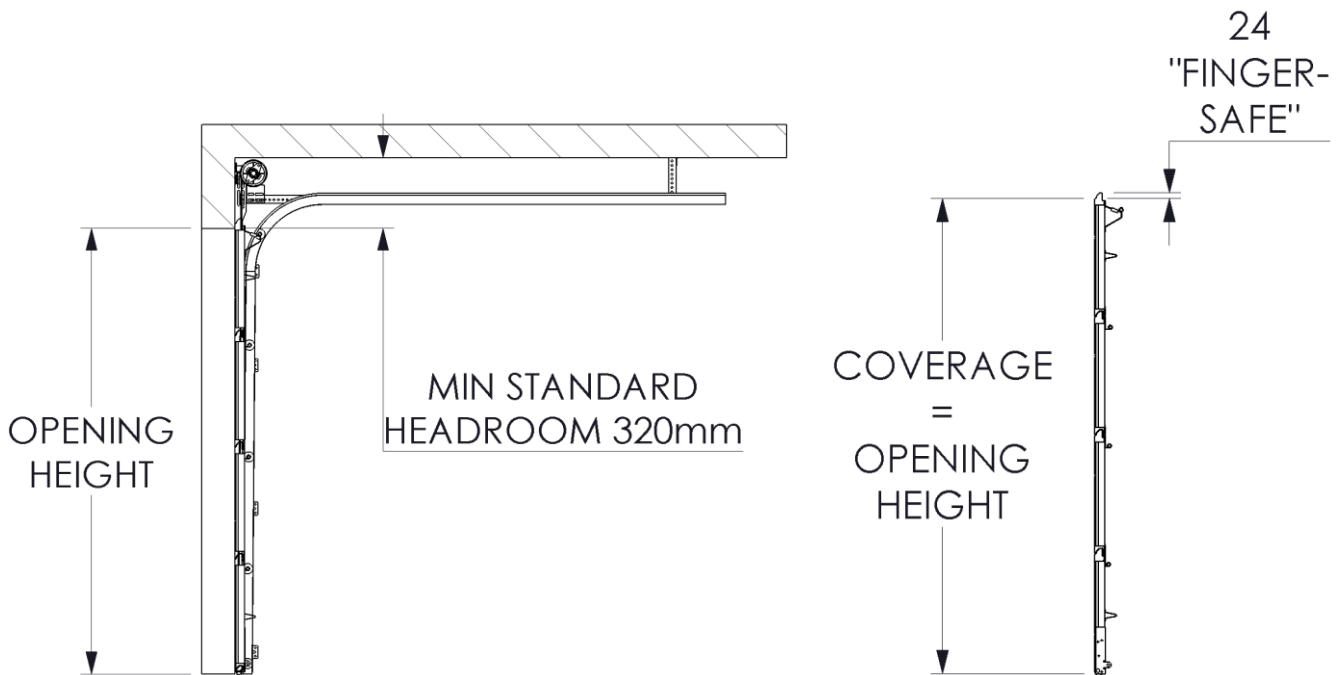


# Sectional Door Installation Instructions

1. Check opening height and door size.
  - a. 25 -30mm overlap on each side and >10mm at top.
  - b. At least 150mm side room required



2. Check headroom clearance, standard is 320mm (with motor).
  - a. Guides are supplied in standard sizes and may need to be cut to size. Cut vertical track at bottom to 170mm less than door height.
  - b. If using low headroom guides and kits (for less than standard clearance), cut track to 320mm less than door height.



3. Attach flag brackets to top of guides with small carriage bolts and attach jamb brackets. Figure 1.

Note, ensure that the flat edge of guide is closest to the wall/structure

- a. Up to 2400mm opening height: 2 brackets per side plus flag bracket
- b. Over 2400mm opening height: 3 brackets per side plus flag bracket

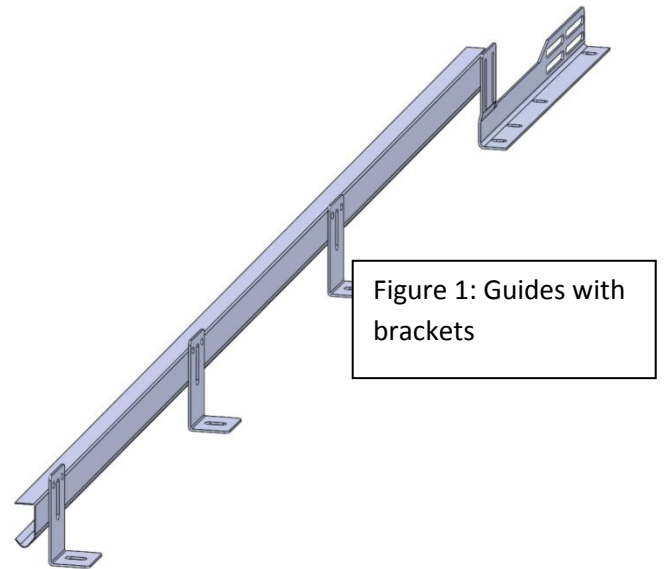
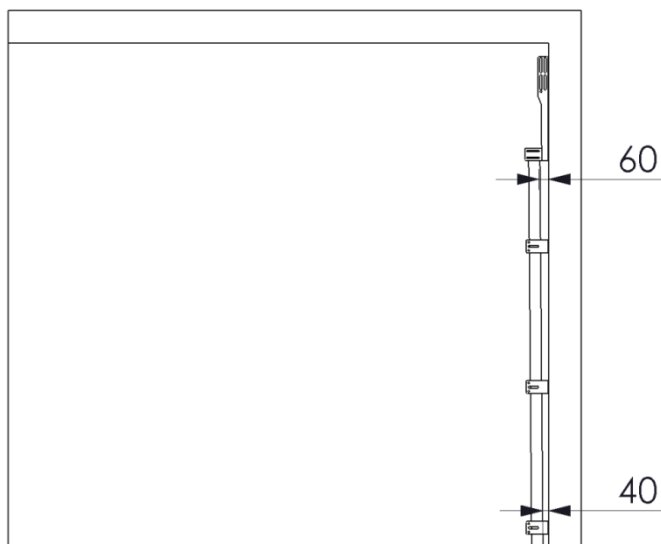


Figure 1: Guides with brackets



4. Prepare bottom door panel, this has the weather seal.
  - a. Place face down on padded saw horses, or other padded stand.
  - b. Attach bottom cable brackets to each bottom corner using metal screws
  - c. Attach loop in lifting cables over Milford pin. Figure 2

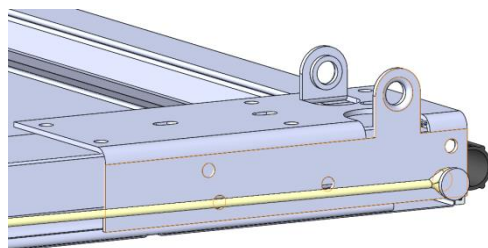
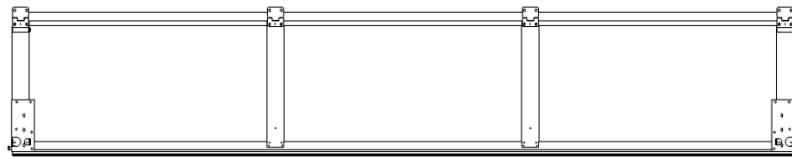


Figure 2: Milford Pin

- d. Attach End hinge on each top corner of bottom panel and centre hinges to other stiles. (Doors with double end-stiles to have an extra end hinge at each position) Figure 3



3

Figure 3: End Hinge



- e. Slide rollers into each bottom bracket and end hinge. Figure 4.

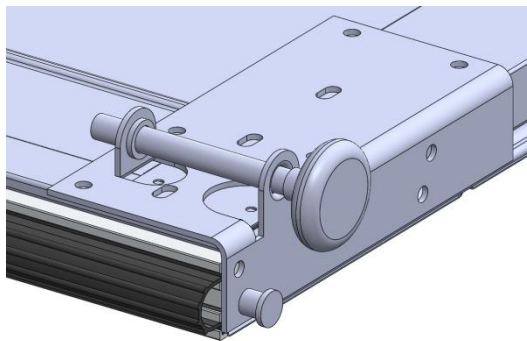
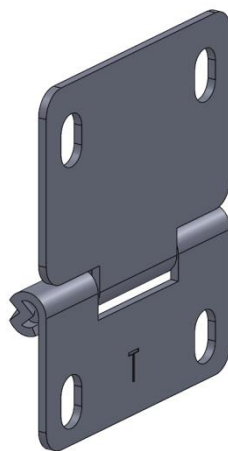
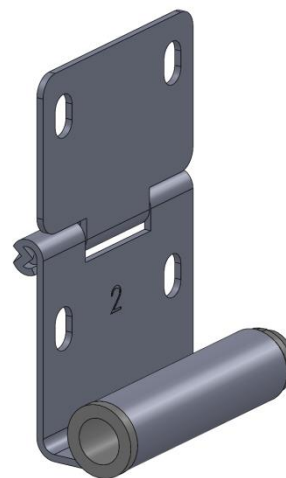


Figure 4: Bottom Cable Bracket

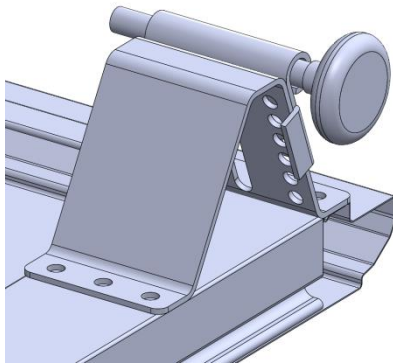
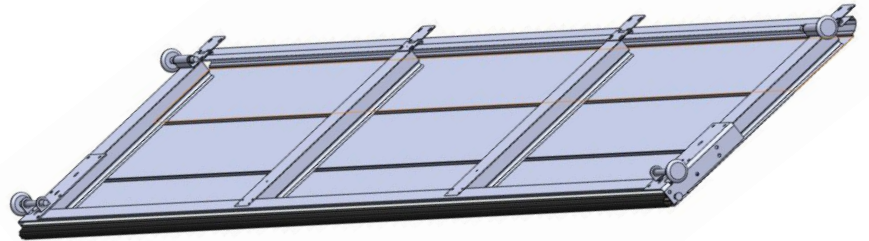
Plain Hinge



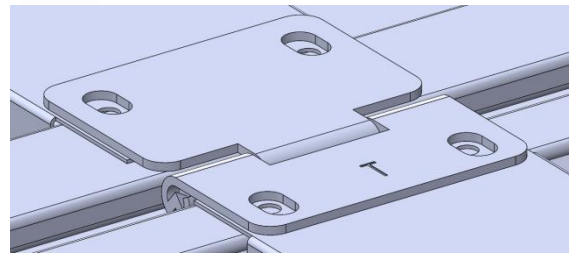
No. 2 Hinge



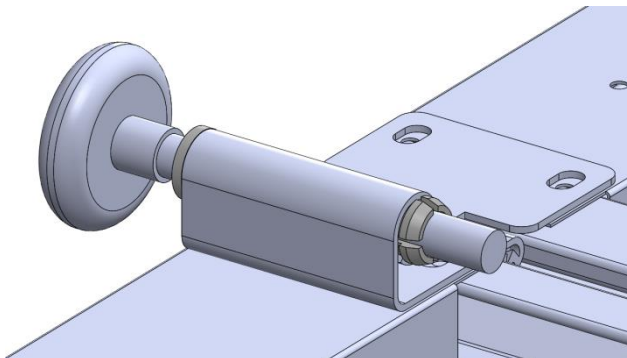
Bottom Panel



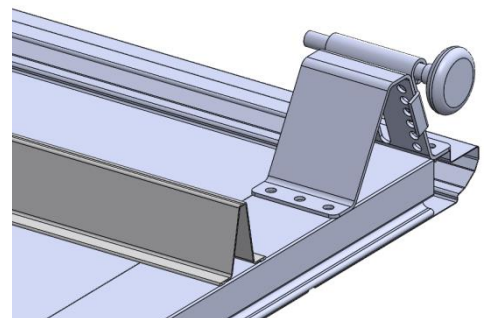
Top Bracket



Hinge on Stile



Bearing Wheel



Top Bracket with Bearing Wheel  
and Reinforcing Strut

5. Stand panel upright behind door opening ensure it is central with 25mm over lap each side. If floor is not horizontally level it is important to use packers under panel to level. Figure 5.

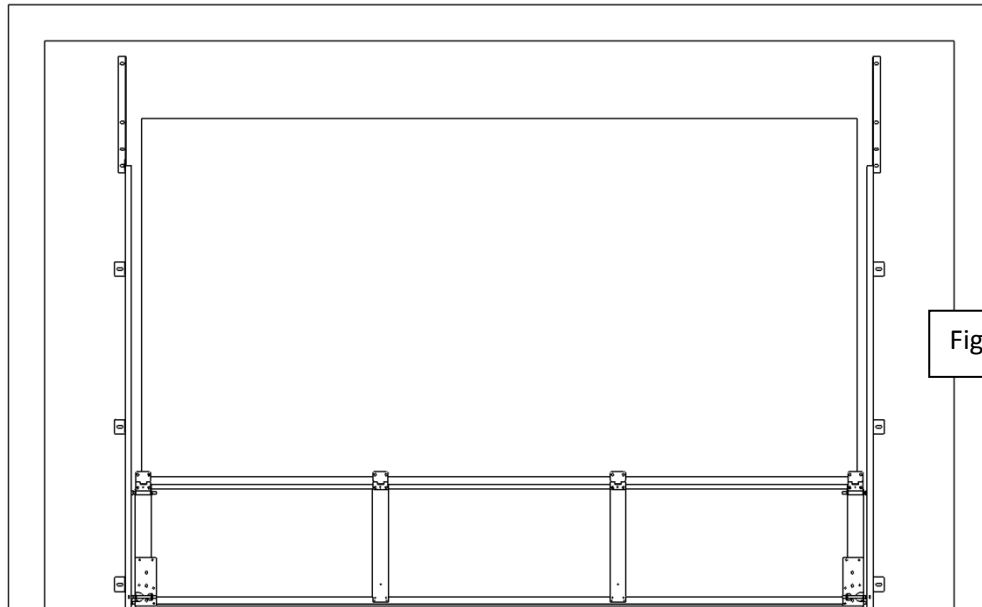


Figure 5: Panels

6. Attach pre-assembled vertical guides to wall
  - a. Slide each track over rollers, holding guide so there is a 5mm gap between hinge and shoulder on roller axle.  
Use spirit level to ensure guide is level. Fix jamb brackets only.
  - b. Adjust guides so there is approx. 40mm between wall and guide at bottom and 60mm at top. Ensure when panel is forced forward it is clear of the garage opening, i.e. brickwork/masonry wall.
7. Attach end hinge to top corner of next panel and centre hinges on other stiles. Place a soft packer, like coreflute packaging, on top of bottom panel to ensure required gap between the panels. Figure 6. Lower next panel onto bottom panel via rollers and tracks, align panels and fix off hinges to join panel.

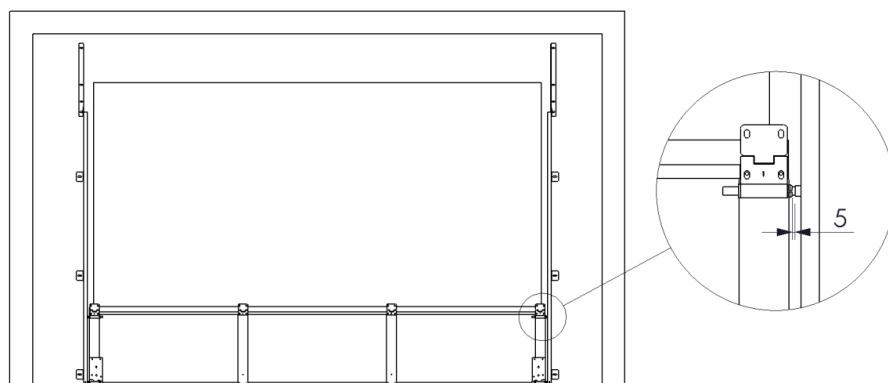
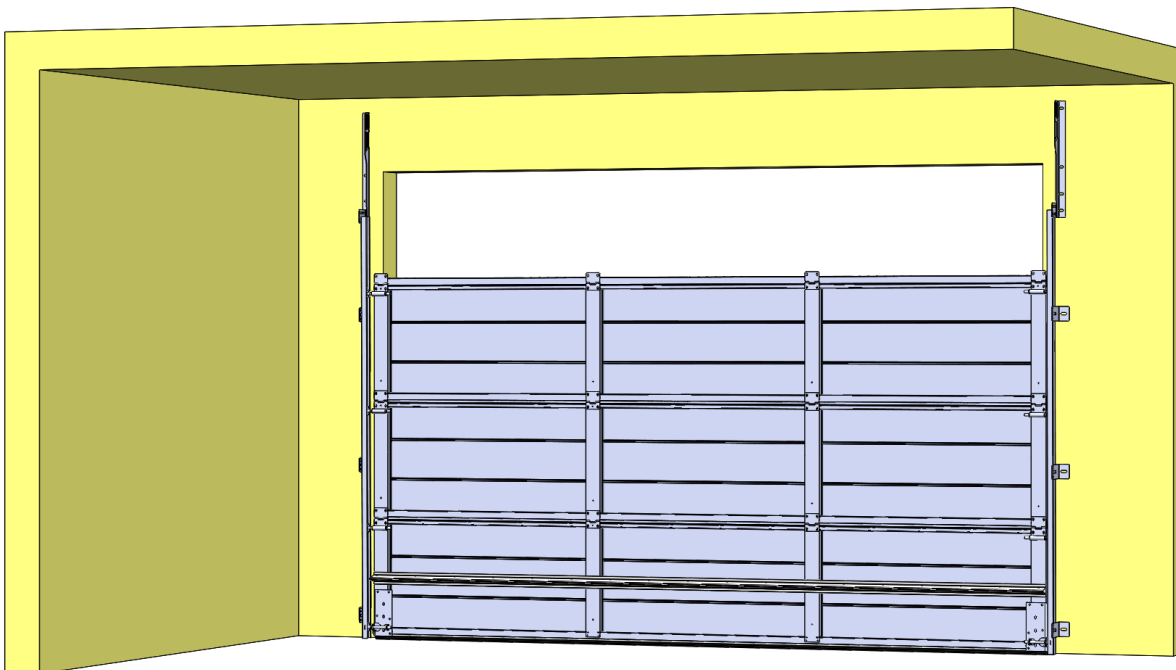




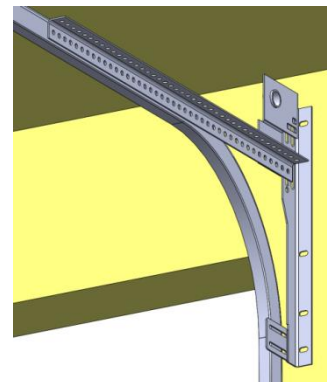
Figure 6: Packing between panels

8. Repeat Step 7 for rest of the panels.



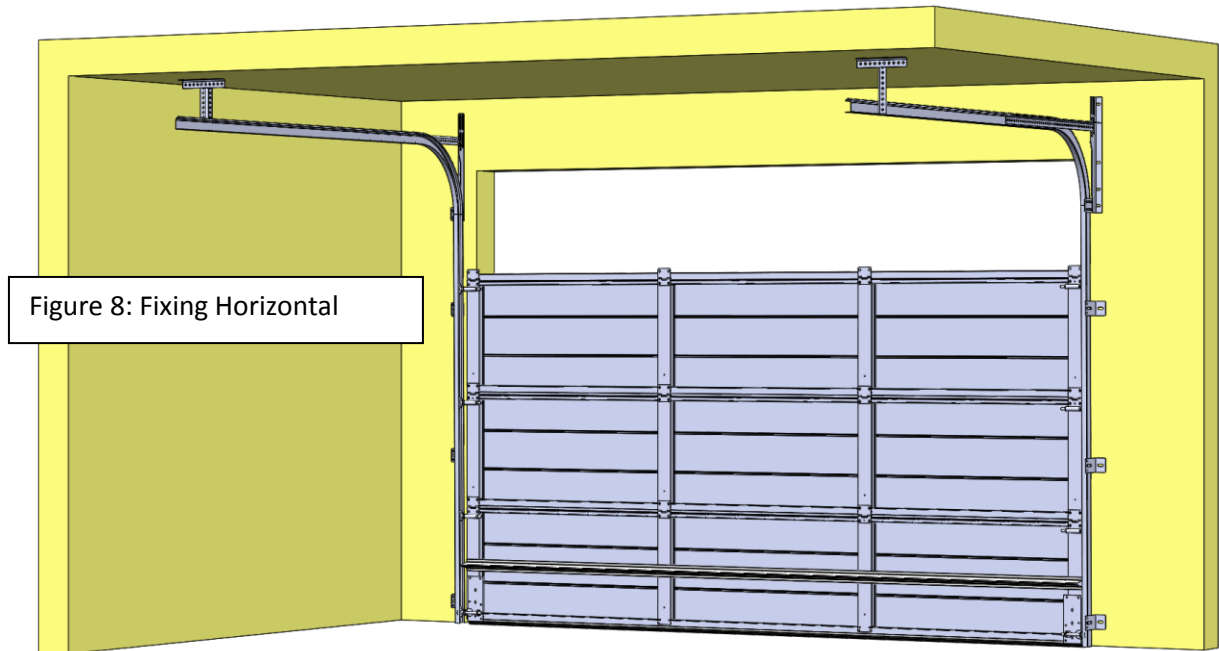
9. Fixing flag brackets: Check tracks are at same height and 10mm gap is even between hinges and shoulders of roller axles then fix off brackets to wall. Figure 7.

Figure 7: Fix Flag bracket



10. Affix horizontal tracks:

- a. Attach horizontal angles to horizontal tracks using carriage bolts.
- b. Bolt track to flag bracket, ensure horizontal tracks and vertical tracks are aligned and the horizontal is level.
- c. Secure horizontal track approx. 2400mm back using angle off the ceiling or brackets off side walls. Figure 8.



- d. Before bracing tracks ensure they are square to the opening and level. Measure diagonally from flag bracket to the end of horizontal tracks. Ensure both sides are the same and fix off. Figure 9.

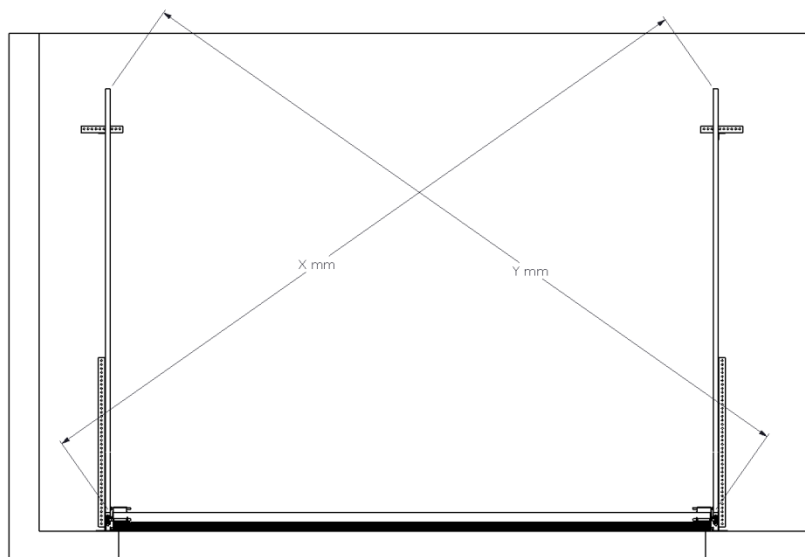
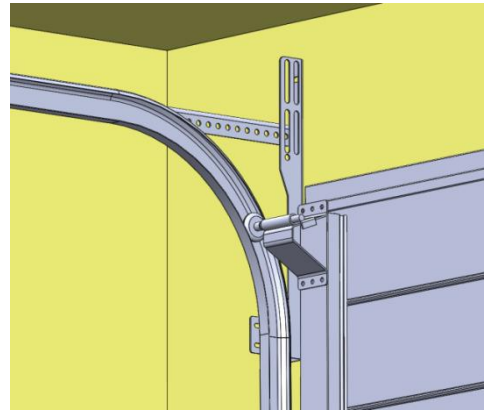


Figure 9:

11. Raise top panel onto other panel in tracks, fix top brackets to top corner and adjust sliding bracket so there is 5-8 mm between panel and wall. (Double end-stile doors to have extra top bracket at each position). Attach remaining hinges. Figure 10.

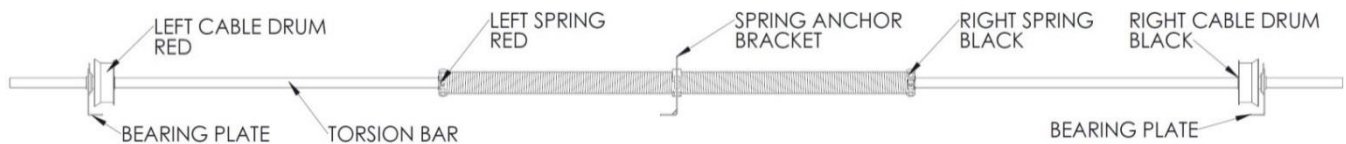
Figure 10: Top Bracket and Track Assembly



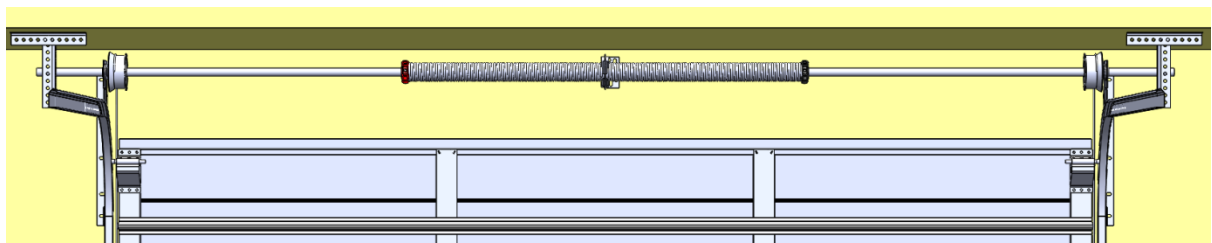
12. Attach any struts to back of panels.

- 0 – 3599W: NO STRUTS
- 3600 – 4399W: 1 STRUT PER DOOR
- 4400 – 5299W: 2 STRUTS PER DOOR
- 5300 – 6050:W 1 STRUT PER PANEL

13. Assemble torsion system (complete with bearing plates):



14. Raise torsion system to inside of horizontal angle and flag bracket. Figure 11. Bolt spring anchor bracket to lintel 100 – 200mm off centre to allow for motor mount. Ensure bracket is affixed to solid fixing. Single spring doors need a bolt or screw installed in the pole next to the spring anchor bracket on each side to stop the pole moving sideways.





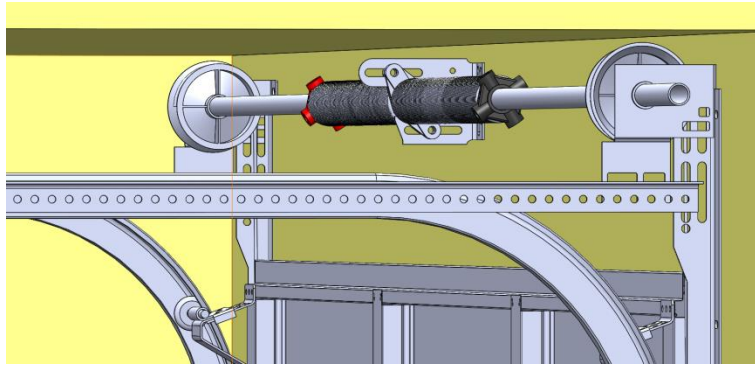
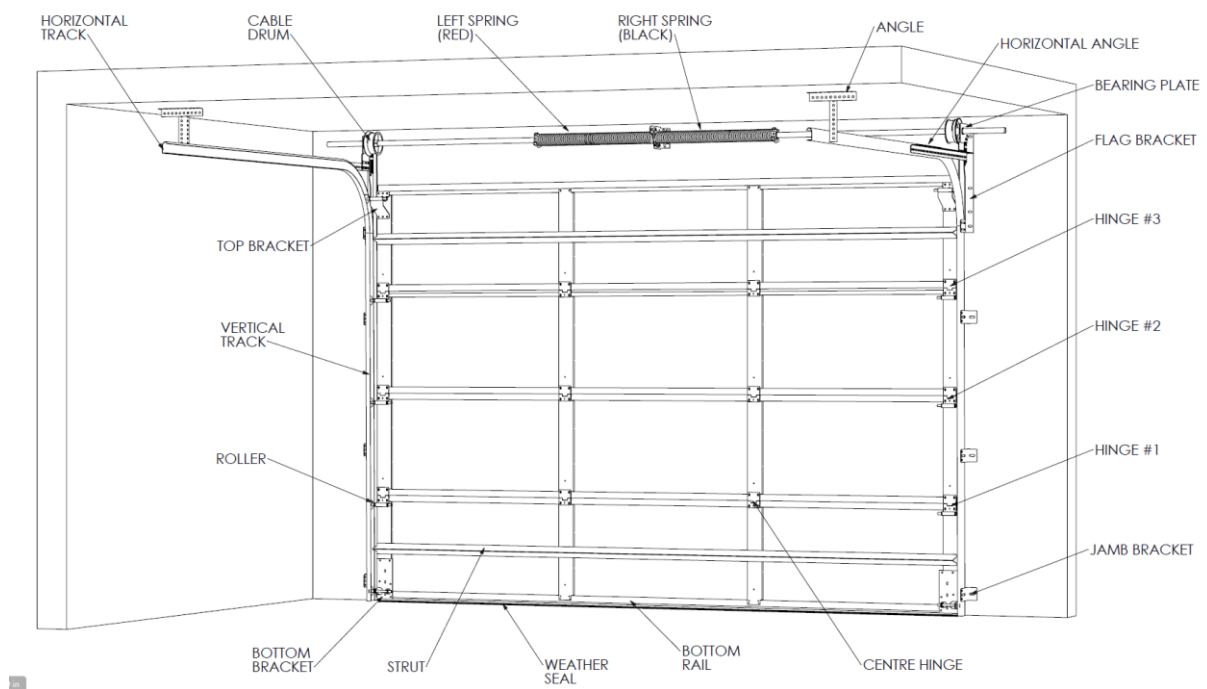


Figure 11: Torsion System



### 15. WARNING

Springs are under tension may cause damage or injury if handled incorrectly. Door must always be closed when adjusting tension. Springs must be tensioned in the direction they are wound. Use only AGDA design-approved winding bars.

### 16. Attach cables:

- Thread cables up between door and track – L/H (RED) side first
- Feed cable between wall and cable drum and insert cable in slot on outside
- Lay cable over outside groove of drum, turn drum to tighten cable and tighten bolts. Ensure drum is against side bearing plate. **Figure 22**
- Repeat on R/H (BLACK) side
- Remove winding bar
- Ensure cable tension is identical each side

17. Spring tensioning procedure is as follows:

- a. Insert winding bar in end cap and raise  $\frac{1}{4}$  of a turn
- b. Insert other winding bar and continue until tension achieved.
- c. Use painted lines on springs to count spring turns
- d. Tighten bolts on end cap and leave winding bar in end cap.

COMMON	
HEIGHTS	TURNS
2485	8.5
2280	8.0
2130	7.5

34
32
30

Each time winding bar is located and raised is 1. 8.0 = 32

18. Tension other spring if door has 2 springs and apply light coating of silicone spray to springs.

19. Attach all warning labels and stickers.

20. Operate door by hand slowly, checking that:

- door falls slightly to the floor in closed position
- door is balanced throughout its travel and travels freely
- door sits neatly at lintel height in open position
- tracks are square – gaps between panels and tracks are even
- when door is 75 % open, bottom panel is level
- cables are tight when door is fully open
- spring tension is correct
- gap between door and wall is uniform. Ensure panels do not hit wall.

## IMPORTANT NOTICE AND DISCLAIMER

The information contained within this brochure is intended for general use and information only. Before application in a particular situation, Stramit recommends that you obtain appropriate independent qualified expert advice confirming the suitability of product(s) and information in question for the application proposed. While Stramit accepts its legal obligations, be aware however that to the extent permitted by law, Stramit disclaims all liability (including liability for negligence) for all loss and damage resulting from the direct or indirect use, or reliance on, the information provided in this brochure.